

---

## Active Rab35

**Catalog Number:** 26922

**Gene Symbol:** RAB35

**Description:** Anti-Active Rab35 Mouse Monoclonal Antibody

---

**Background:** The Rab family of GTPases regulates eukaryotic vesicular membrane traffic. Rab35 is with both plasma membrane and endosomal localization, and has been implicated in diverse processes that include T-cell receptor recycling, oocyte yolk protein recycling and cytokinesis. Rab35 regulates neurite outgrowth in neuronal-like cells, and can induce protrusions.

**Immunogen:** Recombinant full length protein of active Rab35

**Tested applications:** IP, IHC, IF

**Recommended dilutions:**

1 µg for ~2 mg total cellular proteins for IP;

1:100 dilution for IHC, IF

**Concentration:** 1 mg/ml

**Host:** mouse

**Clonality:** Monoclonal

**Isotype:** IgG

**Purity:** Purified from ascites

**Format:** Liquid

**Storage buffer:**

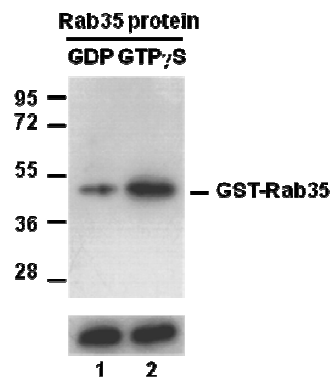
Preservative: no

Constituents: PBS (without Mg<sup>2+</sup> and Ca<sup>2+</sup>), pH 7.4, 150 mM NaCl, 50% glycerol

**Species Reactivity:** Anti-active Rab35 antibody recognizes active Rab35 proteins of vertebrates.

**Storage Conditions:** Store at -20°C. Avoid freeze / thaw cycles

### Immunoprecipitation/Western blot:



**IP:** anti-active Rab35 mAb

**IB:** anti-Rab35 pAb

Rab35 activation assay. Purified full-length Rab35 proteins were immunoprecipitated after treated with GDP (lane 1) or GTP $\gamma$ S (lane 2). Immunoprecipitation was done with the anti-active Rab35 monoclonal antibody (Cat. No. 26922). Immunoblot was with an anti-Rab35 polyclonal antibody (Cat. No. 21078).